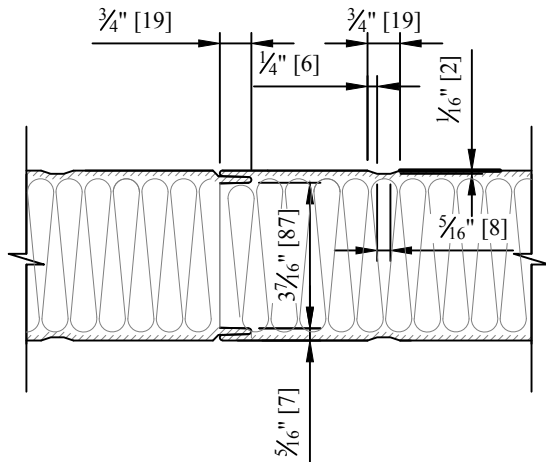
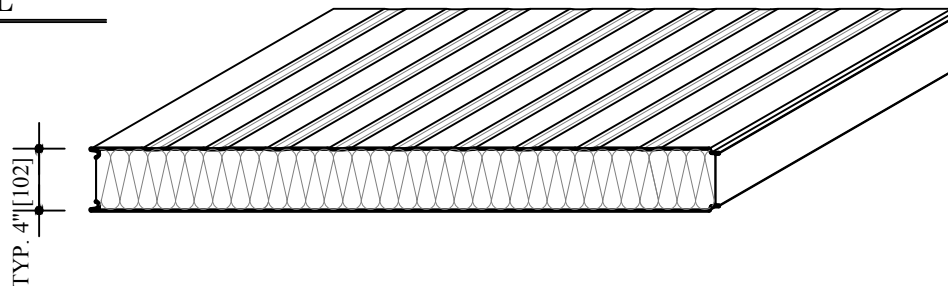
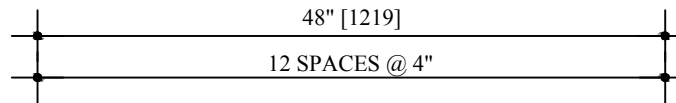


WALL PANEL 2

SCALE: NOT TO SCALE



A **WALL PANEL 2 DETAIL**
D3 SCALE: NOT TO SCALE



GENERAL NOTES

STEEL MATERIAL:

- TOP: 1250mm
- BOTTOM: 1050mm
- Covers Widths: 40"
- Panel Thickness:
- 4" 6" 8" (may be customized)
- Fire Rating:
- Panel Lengths: MAX. 40'-0"
- Reveals:
- Standard 1/8" vertical & horizontal application.
- Exterior/Interior Face:
- 26 GA.
- G-90 galvanized pre-painted steel.
- Panel Joint:
- Double tongue interlocking joint.
- Thermal Resistance:
- R-value/inch@ 75°F
- R-value:

 1. ROXUL: 3.6 per inch.
 2. ESP (Styrofoam): 4.04 per inch

Screws:

1. Unslotted Hex Washer w/Bonded Sealing Washer- Self Drilling Screw
- SIZE:
- 4" Panel - #1/4"-14 x 5"
 - 6" Panel - #1/4"-14 x 7"
 - 8" Panel - #1/4"-14 x 9"
2. Metal to Metal Painted Screws with Bonded Neoprene Washer #9 x 1-1/2" (various types for custom orders)

No.	Revision/Issue	Date

Manufacturing Facility:
 531 Shaw Road
 Dorchester, Ontario, Canada
 N0L 1G4



Title:
 INSULATED WALL PANELS
 "WALL PANEL 2"

Project: Panel Dimensions	D3
Scale: SEE DWG.	
Drawn By: A.W.	
Date: 11-Aug-16	