

General Notes

Insulation Information: (2 types available)

1. **ROXUL**
ROXUL products are mineral wool fibre insulations made from basalt rock and slag. This combination results in a non-combustible product and a melting point of approx. 2150°F (1177°C), which gives it excellent fire resistant properties. ROXUL mineral wool is a water repellent yet vapour permeable material.

Compliance and Performance:

ASTM E 84 (UL725)
Surface Burning Characteristics:
Flame Spread = 0
Smoke Developed = 5
ASTM E 136
Behavior of Materials at 750°C (1382°F):
Non-Combustible
CAN4 S114
Test for Non-Combustibility:
Non-Combustible

Moisture Resistance:

Moisture Sorption = 0.05%

Dimensional Stability:

ASTM C 356
Linear Shrinkage = 0.19%

Thermal Resistance:

ASTM C 518 (C 177)
R-value/inch @ 75°F = 4.0hr.ft².F/Btu
RSI value/25.4mm @ 24°C = 0.71m².K/W

Corrosion Resistance:

ASTM C 165
Corrosiveness = Passed
ASTM 795***
Stainless Steel Stress Corrosion Specification as per
Test Methods C871 & C692: U.S. Nuclear Regulatory
Commission, Reg. Guide#1.36: U.S. Military Spec.'s
MIL-I-24244 (all versions including B and C)

Density:

8.5 lbs/ft³ 136 kg/m³

Compressive Strength:

ASTM C 165 @ 10% 4" Board: 6.64psi (45.8kPa)



2. **Plasti-Fab**
PlastiSpan Insulation HD is a moulded expanded polystyrene (EPS) insulation. EPS is a closed cell, rigid foam plastic insulation that does not contain a blowing agent such as HCFC or HFC that provides a temporary increase in thermal resistance.

- Meets CAN/ULC-S701, Type 2
- Thermal resistance - RSI 0.70/25 mm R-value 4.04/inch
- Compressive resistance: 16 psi
- Closed cell insulation resists moisture
- CCMC 12425-L

No.	Revision/Issue	Date

Manufacturing Facility:
531 Shaw Road
Dorchester, Ontario, Canada
N0L 1G4



Title:
SANDWICH PANELS
ROOF PANEL PROFILE

Project: Panel Dimensions

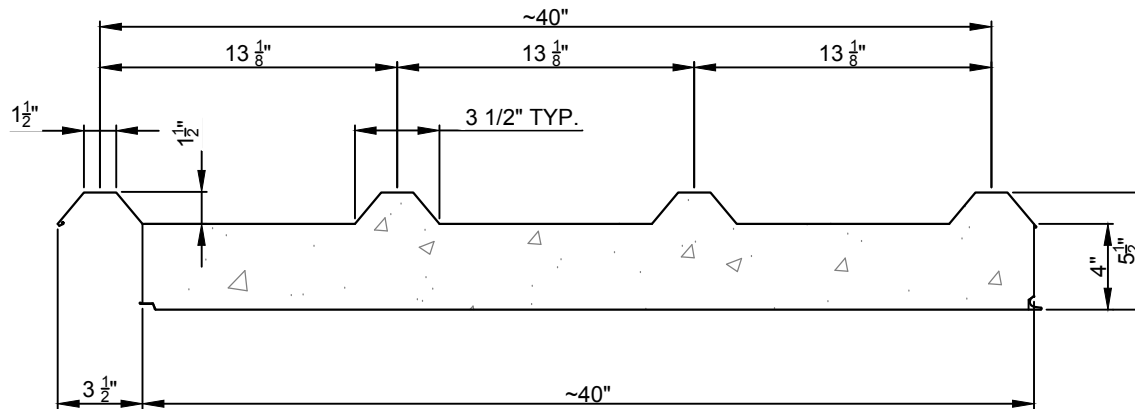
Scale: SEE DWG.

Drawn By: A.W.

Date: 06/06/15

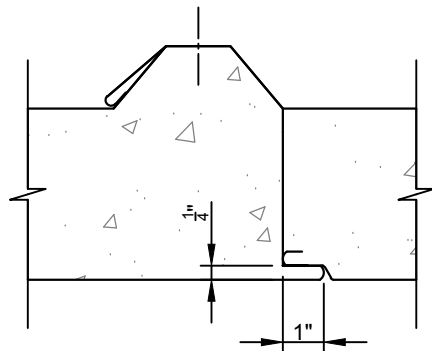
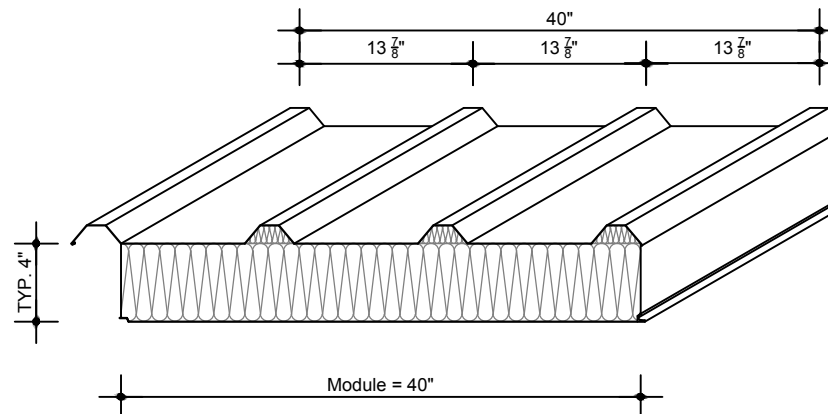
Sheet

D1



ROOF PANEL PROFILE

SCALE: 1:2



ROOF PANEL DETAIL

SCALE: 1:1

Covers Widths: ~40"

Panel Thickness: 4" 6" 8"

Fire Rating: 1 hour 2 hour 3hour

Panel Lengths: 6'-0" to 40'-0"*

Reveals: Standard 1/8" vertical and horizontal application.

Exterior Face: 24 or 22 Ga. Shadowline, Micro-Rib, Azteco[®],
Granitestone or V-Groove profiled embossed
Galvalume or G-90 galvanized pre-painted steel.

Interior Face: 26 or 24 Ga. Shadowline profiled embossed Galvalume
or G-90 galvanized steel.

Panel Joint: Double tongue and groove interlocking rainscreen joint.

R-value: 3.6 per inch.